

N.E. 1/4 OF SECTION 9, T.6N., R.1W., S.L.B. & M.

IN OGDEN CITY & WEBER COUNTY

TAXING UNIT: 23, 25

SCALE 1" = 200'

SEE PAGE 5

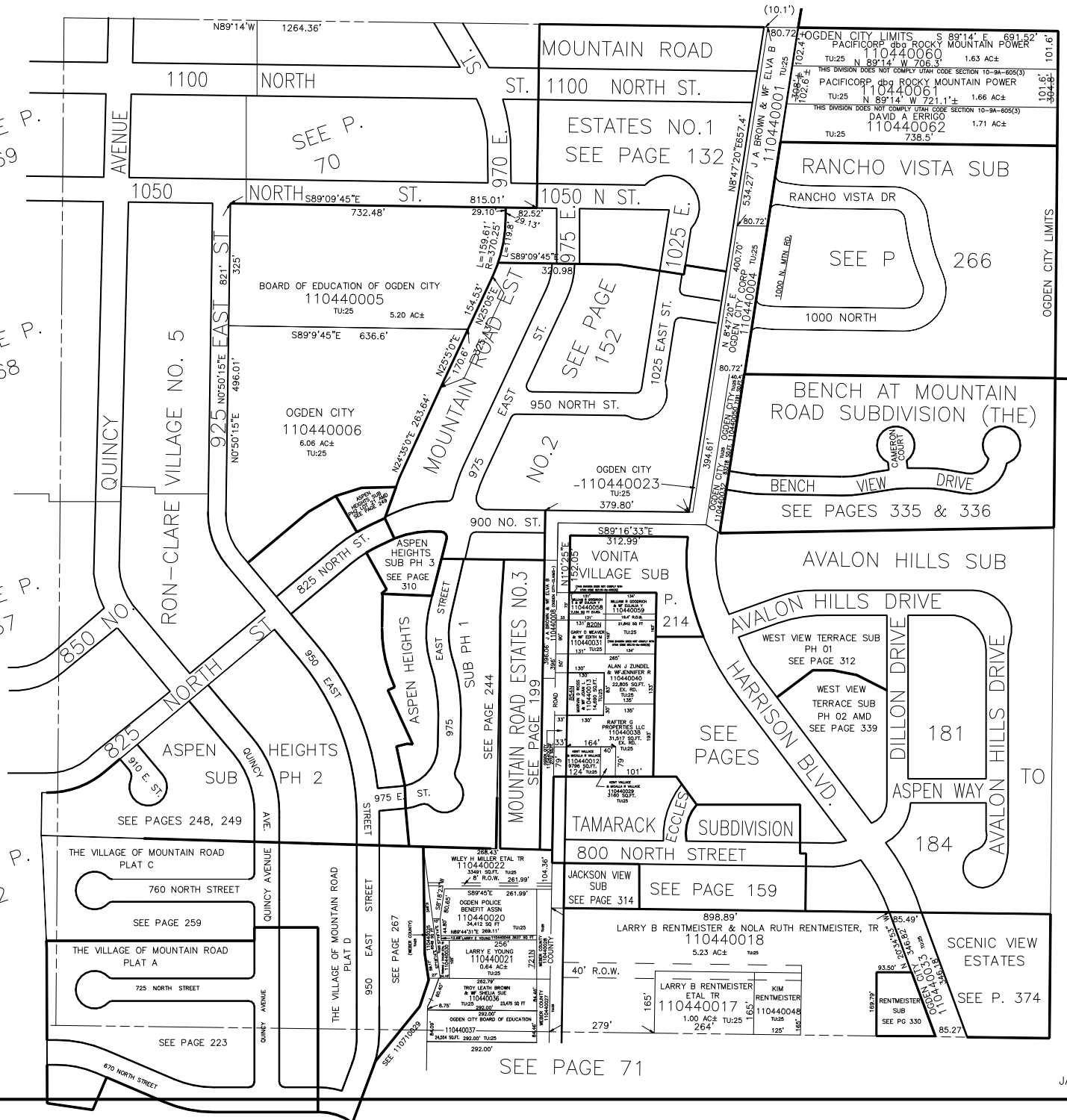
SEE P. 69

SEE P. 68

SEE P. 67

SEE P. 62

11



SEE PAGE 84

SEE PAGE 71